



ARTWORK
by
Heather Findlay



Catalogue

February 2009

Hello and welcome to my artwork catalogue.

Each print is limited to 200 and all artwork is reproduced on high quality 300gsm colourtech heavyweight paper, and each print is personally numbered and signed.

The image size fits within the paper size with a margin of approximately 2.5 cm (1 inch). The prints are not matted or framed so you can choose the appropriate matting and frame that will compliment your interior decoration.

All orders are dispatched flat pack, in strong envelopes.

A handwritten signature in black ink that reads "Heather Findlay". The signature is written in a cursive style with a decorative flourish at the end.

Print size:

A3 (297mm × 420mm / 11.7" × 16.5")

Price per print:

£25

Disclaimer: Colours may vary slightly from those shown in this catalogue.



Print One

The Eyes Of The Forest

*This illustration depicts the song of the same title that I wrote with Bryan for our third album *The Last Bright Light*. It was featured on the album booklet but only as a background. This is the first time it has been commercially available.*

Catalogue order number: HFA3-EOTF-200

Print Two

Which Wood?

*This is my interpretation of Angela Gordon's instrumental song from the *Last Bright Light*. As with *Eyes Of The Forest* the art was used on the album booklet but only as a background, and once again this is the first time it has been commercially available.*

Catalogue order number: HFA3-WW-200



Print Three

The Dark Before The Dawn



*This is the original sketch, which became the basis for both *The Dark Before The Dawn* and *Shrinking Violet*. It was used as the front cover (albeit with a purple tint) for the limited edition promo CD of *The Last Bright Light* that was exclusively available at*

the Lion Inn, Blakey Ridge launch party for the album.

Catalogue order number: HFA3-DBTD-200



Print Four

Shrinking Violet

*Shrinking Violet is a very personal song from the *The Last Bright Light* and is illustrated here in colour featuring both the same character and scene as *The Dark Before The Dawn* sketch with the addition of the Dancing Ghost Child character.*

Catalogue order number: HFA3-SV-200

Print Five

Mother Nature 2000

*This is the original illustration that was used to form the album cover for *The Last Bright Light*. It is my interpretation of the dismayed Mother Nature written about by Bryan in the songs *Mother Nature* and the *Last Bright Light*.*



Catalogue order number: HFA3-MN00-200



Print Six

Heroes Never Die

*This is my interpretation of Bryan as a child with his father Robbie; the inspiration behind the song it represents. It was sketched to be included in the sleeve of *Heroes Never Die* a now deleted anthology release. I used a photograph of Robbie that was originally featured in the sleeve of *For All We Shared*. I sketched this as with all images for our album art, whilst recording in Fairview Studios. I was particularly pleased with this illustration as Bryan really felt it captured his fathers' likeness.*

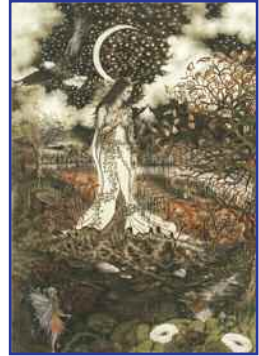
Catalogue order number: HFA3-HND-200

Print Seven

Mother Nature 2002

*This was used on the back cover art for the anthology release *Catch the Spirit*. It was an image intended for use as the cover but CRP insisted it was too dark. Funnily enough a batch of them were somehow accidentally printed inside out so in the end it too got its little taste of the limelight!*

Catalogue order number: HFA3-MN02-200



Print Eight

Catch The Spirit

*This sketch was also done to be included in the sleeve of our Anthology album of the same title and features both the *Dancing Child* and *Mother Nature* characters.*

Catalogue order number: HFA3-CTS-200

Print Nine

Simple Ways

*This was originally planned for the *Passengers* album, but for various reasons the artwork was changed and I decided I wanted to keep hold of it along with *Another Life*. Both pieces re-emerged however as part of the artwork for the limited edition release of the *Grand Opera House* DVD within which, they are featured as end papers.*



Catalogue order number: HFA3-SW-200



Print Ten

Another Life

Along with Simple Ways this was also originally planned for the Passengers artwork but eventually found its home on the limited edition release of the Grand Opera House DVD.

Catalogue order number: HFA3-AL-200

Print Eleven

The Hanging Tree

This was a commissioned design for the song of the same name by Blackmore's Night and was used on the booklet that accompanied the album Fires At Midnight on which the song appeared.



Catalogue order number: HFA3-THT-200

Background

In 2001 at Lumley Castle near Durham Bryan, Angela and I were asked to perform as part of Blackmore's Night for some press shows they'd organised to take place there over a fortnight or so to promote their third album Fires At Midnight.

We were included in all kinds of photo shoots for the forthcoming album's potential cover and were privy at the time to there being a lot of typical artist versus record company dispute regarding which. It appeared that differing global territories had specified the exclusion of various elements such as fire or the full moon for seemingly religious reasons.

It was during the afternoon one day when Ritchie came to me holding the cover booklet of The Last Bright Light asking had I really done the illustrations for which? Over dinner that night Ritchie and Candice asked me to create an illustration for their album cover. Candice drew a little sketch of the lady featured within the illustration. A doodle she would often draw herself and that she said she'd like to be perhaps included somehow. Ritchie then drew a Chad and asked if that could be included too! I fortunately knew his deadpan humour well enough by then to have realised it was a joke before putting pencil to paper. It was once they'd arrived back home in the US that the image was completed with its' original albeit taboo full moon and stormy sky which Ritchie and Candice both loved but came back hours later asking for the moon to be edited from the image for reasons discussed above. I was fortunate in that I was in fact able to manually edit the hand drawn image but it was

I remember a very close call due to time scale!

After the albums' subsequent release, during the following tour at a show in Reading, (on Bryan's birthday I believe) Ritchie came to me for a word about which I worried (as is the thing to do when Ritchie wants a word!) But, to my surprise (and relief!) he wanted to apologise and express his frustration and disappointment at how the illustration had been only included in the sleeve and not used as the cover.

I remember he said when he had seen it he'd exclaimed "What is that?" to the record company to which they told him it was too late and they'd had to go with the gang shot image instead (which actually includes us too, full of mead, banging on one of the castle doors!) McKinty can just about be picked out in the group but the rest of us are a little buried. In true Ritchie style I think this was a shot he had himself directed as opposed to the ones that had been taken of us all that afternoon by record company commissioned rock photographer George Chin!

The Hanging Tree illustration was actually used in the end as the front cover for the Hong Kong release of the album as depicted here. It was Jerry Bloom who informed me of such after discovering it fairly recently.



ORDER DETAILS

All prints can be ordered online at www.mbtystore.co.uk

If you prefer to pay by cheque, please make these payable to **Wymer UK** and remember to add postage as detailed overleaf:

You can also order with a credit or debit card (except American Express) by calling **Wymer UK** on 01234 326691 or email: mbtp@mbtystore.co.uk

Complete the form overleaf.

HEATHER FINDLAY ARTWORK ORDER FORM

I enclose a cheque / postal order payable to **Wymer UK** for
 £..... (€ Sterling only) (REMEMBER TO ADD POSTAGE, see right)

(Print clearly in block capitals)

First Name.....

Surname.....

Address.....

Post code:

Tel:

Email:

Telephone and email details are not supplied to other companies.

Please debit my card (tick appropriate box)

Visa Mastercard Visa Delta Visa Electron Switch / Maestro

Important: Please ensure you include the full address the card is registered to,
 if different from address above.

Name (on card):

Card No:

Start Date (mm:yy):

Expiry Date (mm:yy):

Sec Code:

Switch / Maestro issue No:

(last 3 digits on signature strip)

(not on all Maestro cards but it must be included where applicable)

Send to: Wymer UK, PO Box 155, Bedford, MK40 2YX, ENGLAND

Tel: 01234 326691 Email: mbtp@mbtpstore.co.uk

Order online at www.mbtpstore.co.uk

| PRINT | CAT No. | QTY |
|----------------------------------------------------------------------------------------------------------------|---------------|-----|
| Eyes Of The Forest | HFA3-EOTF-200 | |
| Which Wood? | HFA3-WW-200 | |
| Dark Before The Dawn | HFA3-DBTD-200 | |
| Shrinking Violet | HFA3-SV-200 | |
| Mother Nature 2000 | HFA3-MN00-200 | |
| Heroes Never Die | HFA3-HND-200 | |
| Mother Nature 2002 | HFA3-MN02-200 | |
| Catch The Spirit | HFA3-CTS-200 | |
| Simple Ways | HFA3-SW-200 | |
| Another Life | HFA3-AL-200 | |
| Hanging Tree | HFA3-HT-200 | |
| Postage costs: | | |
| UK - Up to 5 prints = £3.00; 6-11 = £5.00. | | |
| Europe - Up to 5 prints = £7.00; 6-11 = £10.00. | | |
| Rest - Up to 5 prints = £10.00; 6-11 = £14.00. | | |
| If ordering more than 11 prints, please call for rates. | | |
| All UK orders are sent recorded delivery. | | |
| All Overseas orders are sent by International signed for service | | |
| Feel free to photocopy this form, but if you use the original we will send a new catalogue with your order. | | |